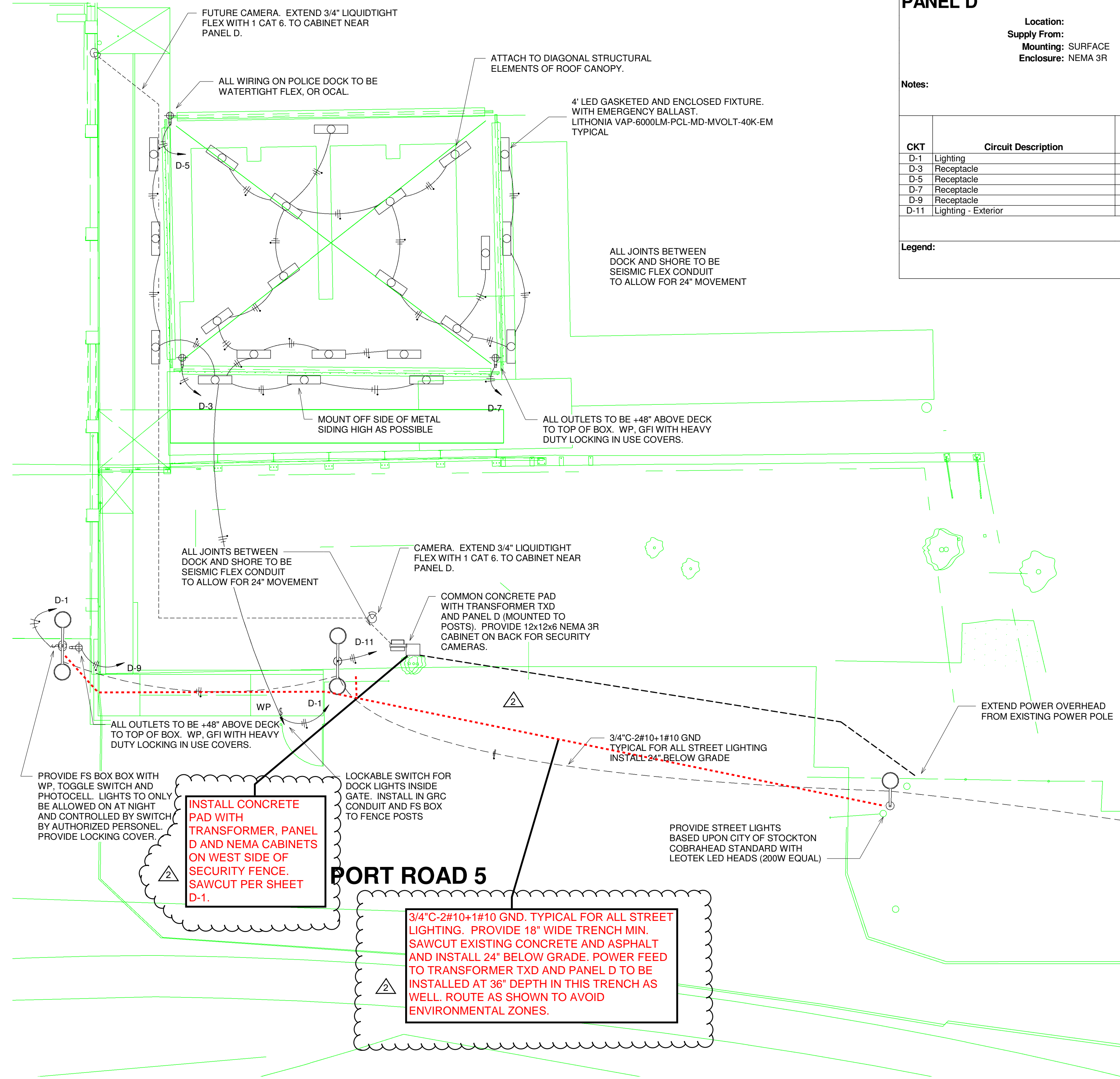


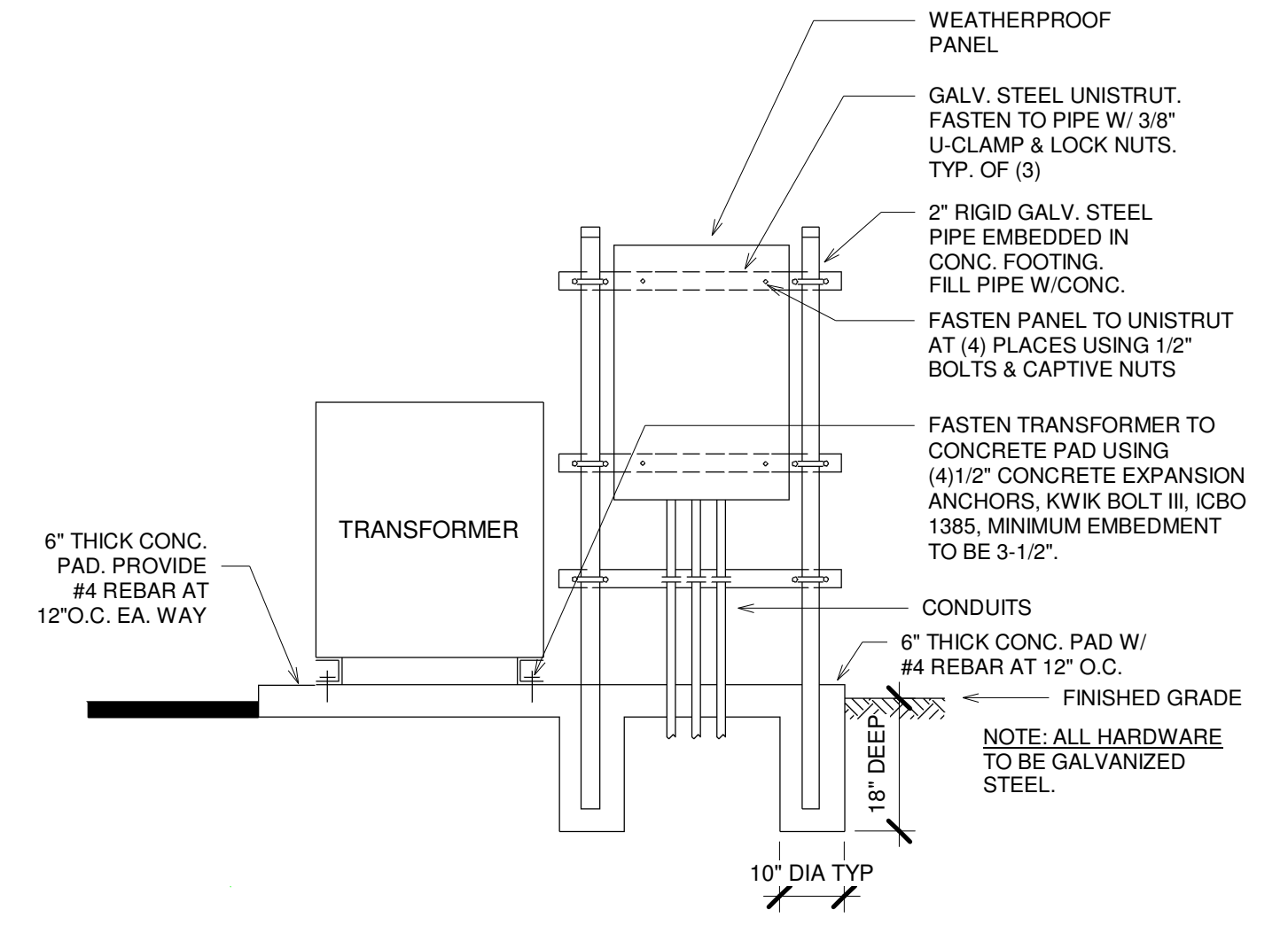
ELECTRICAL LEGEND	
	LIGHTING FIXTURES LINEAR FIXTURE SQUARE = RECESSED CIRCLE = SURFACE DOWNLIGHT, SQUARE = RECESSED WALL MOUNT CEILING EXHAUST FAN POLE MOUNT AREA LIGHT FIXTURE NOTATIONS: A,(b),C-12 = FIXTURE TYPE "A", SWITCH "b", CIRCUIT C-12
	BASIC LIGHTING CONTROLS LIGHT SWITCH, +48" TO TOP OF BOX D = DIMMER 3 = SWAY P = PILOT SWITCH OS = LINE VOLTAGE OCCUPANCY SENSOR T = TIMER VS = VACANCY SENSOR WALL MOUNT OCCUPANCY SENSOR (LINE VOLTAGE)
	ELECTRICAL POWER ALL LINE VOLTAGE WIRING IN CONDUIT, SEE GENERAL NOTES TICKS = # OF #12 WIRE, SHORT = HOT, LONG = NEUTRAL, DOT = GROUND, UNLESS NOTED OTHERWISE 120V OUTLET, +18" TO BOTTOM OF BOX S = SIGN F = FLOOR GFI = GROUND FAULT INTERRUPTER COUNTER OUTLET QUADRUPLX OUTLET HALF SWITCHED OUTLETS OUTLETS ON EMERGENCY SYSTEMS DUCT SMOKE DETECTOR JUCTION BOX MOTOR / DISCONNECT PANELBOARD TRANSFORMER / SWITCHBOARD AS NOTED
	DRAFTING NOTATIONS KEY NOTE, SEE SCHEDULE EQUIPMENT TAG, SEE SCHEDULE REFERENCE TO A DETAIL VIEW "A" ON SHEET E-2 NEW ELECTRICAL EXISTING ELECTRICAL OR DEMOLISHED WHERE NOTED EXISTING DEVICE, TO REMAIN IN OPERATION REMOVE DEVICE, KEEP REMAINDER OF CIRCUIT IN OPERATION REMOVE, RELOCATE AND RECONNECT DEVICE ON EXISTING CIRCUIT, EXTEND CIRCUIT



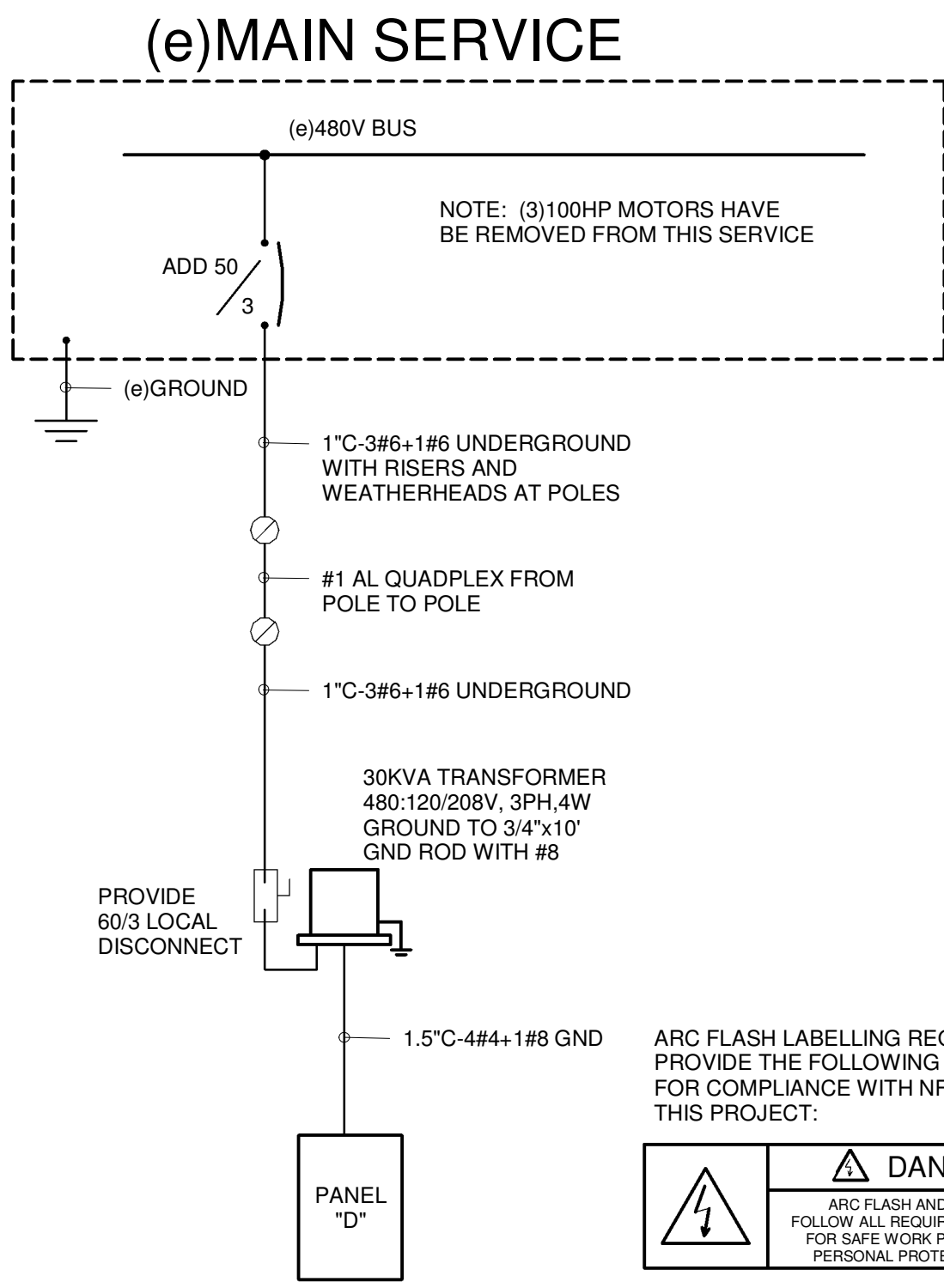
1 ELECTRICAL PLAN
SCALE: 1/8" = 1'-0"

PANEL D	
Location:	Volts: 120/208 Wye
Supply From:	Phases: 3
Mounting: SURFACE	Wires: 4
Enclosure: NEMA 3R	A.I.C. Rating: 10,000
	Mains Type: MCB
	Mains Rating: 80 A
	MCB Rating: 80 A

CKT	Circuit Description	Trip	Poles	A	B	C	Poles	Trip	Circuit Description	CKT
D-1	Lighting	20 A	1	770 VA	0 VA		1	20 A	Spare	D-2
D-3	Receptacle	20 A	1		180 VA	0 VA	1	20 A	Spare	D-4
D-5	Receptacle	20 A	1			180 VA	1	20 A	Spare	D-6
D-7	Receptacle	20 A	1	180 VA	0 VA		1	20 A	Spare	D-8
D-9	Receptacle	20 A	1		180 VA		1	20 A	Spare	D-10
D-11	Lighting - Exterior	20 A	1			600 VA				D-12
				Total Load:	950 VA	360 VA		773 VA		
				Total Amps:	8 A	3 A		7 A		



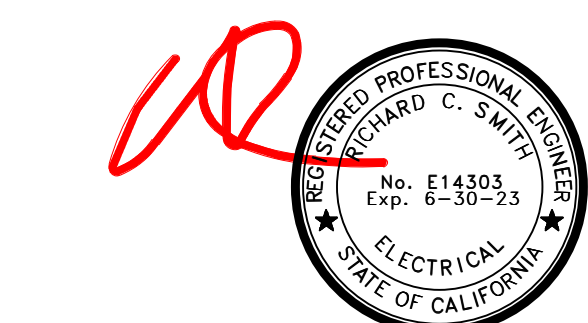
2 PANEL D MOUNTING
SCALE: NTS



3 ONE LINE DIAGRAM
SCALE: NTS

ARC FLASH LABELLING REQUIREMENT:
PROVIDE THE FOLLOWING LABEL AS A MINIMUM FOR COMPLIANCE WITH NFPA AND NEC ON THIS PROJECT:

	DANGER ARC FLASH AND SHOCK HAZARD FOLLOW ALL REQUIREMENTS IN NFPA 70E FOR SAFE WORK PRACTICES AND FOR PERSONAL PROTECTIVE EQUIPMENT
--	--



HCS Engineering inc.
50 years
4512 Feather River Dr #F, Stockton, CA 95219
209-478-8270 | www.hcs-eng.com

REV. NO.	DESCRIPTION	DATE
2	ADDENDUM NO. 2	5/12/2022

**PORT OF STOCKTON
FIRE BOAT STRUCTURE REHABILITATION**

ELECTRICAL PLAN

STOCKTON, CALIFORNIA
JUNE, 2021

SCALE: AS SHOWN	SHEET
DRAWN BY: RM	E2
DESIGNED BY:	
CHECKED BY: RCS	
AS BUILT BY:	

SEE THIS SHEET FOR BENCHMARK INFORMATION

JOB NO. 1952