

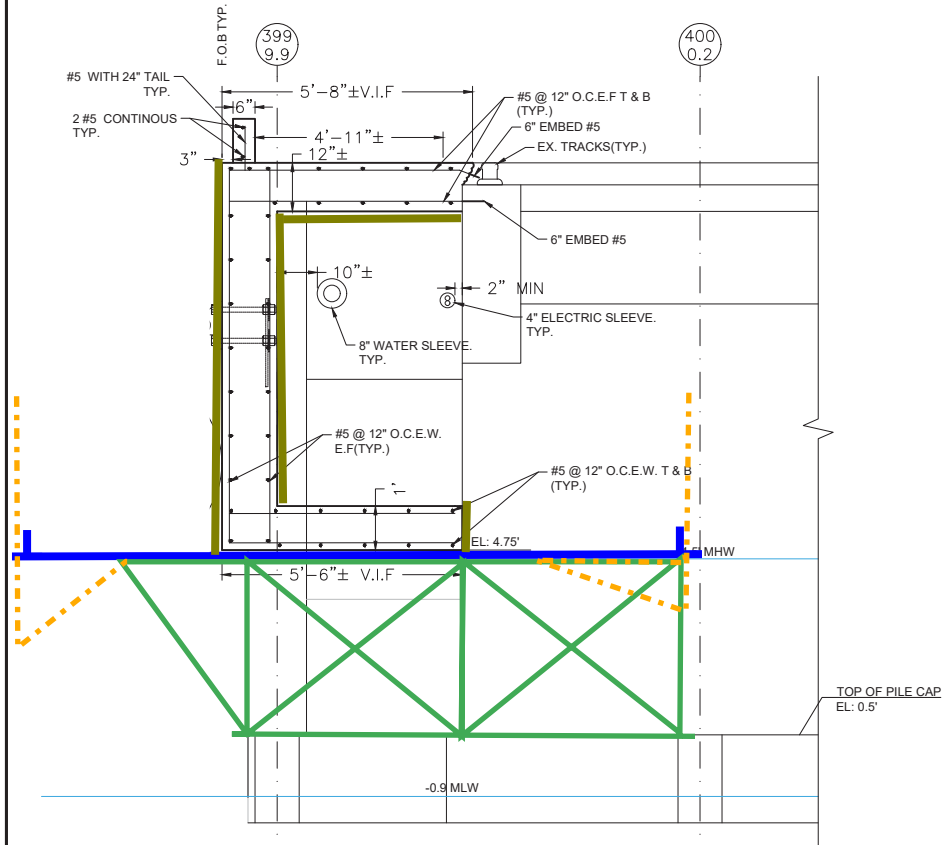
E.1 WEST ELEVATION
SCALE: 1/2"=1'

S.1 SIDE ELEVATION 1
SCALE: 1/2"=1'

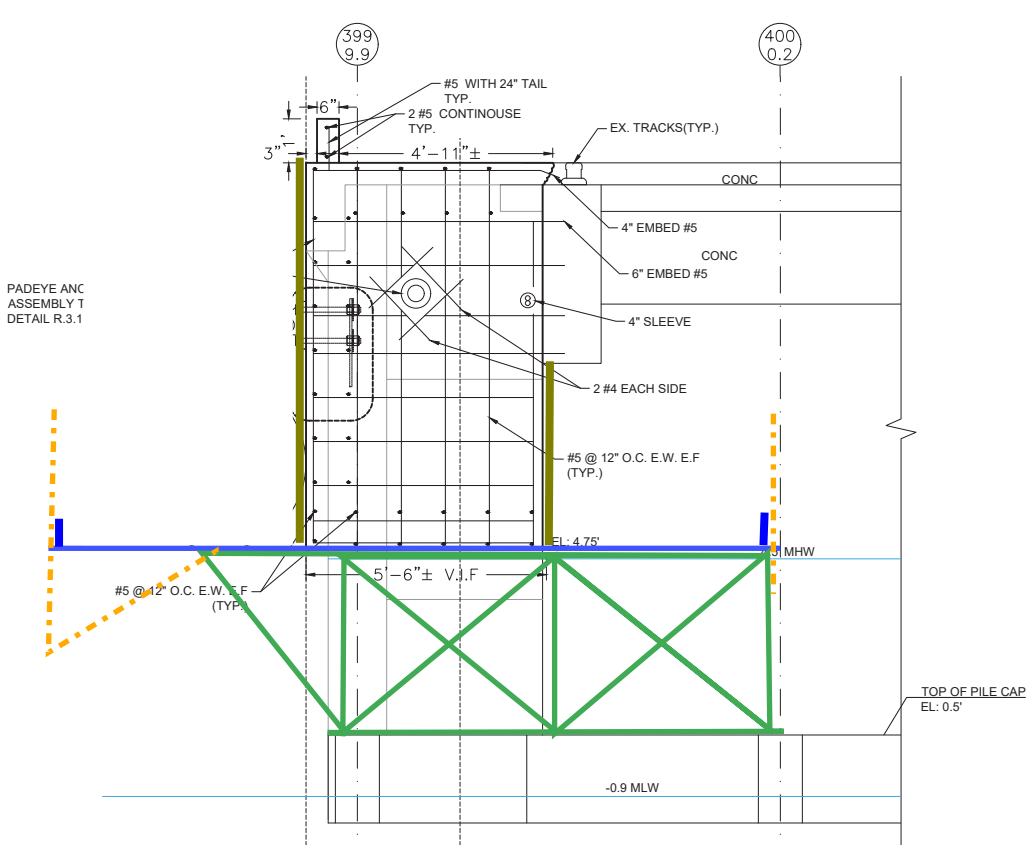
- LEGEND**
- EX. CONC. TYP. V.I.D F.O.B
 - EXISTING CONCRETE TYPICAL VERIFY IN FIELD FACE OF BERTH
 - E.1 NEW FENDER SUPPORT (TYPE 2)
 - SAWCUT LINE
 - ~ CHIP
 - WATER LINE

- - - Safety rail
- Waterproof forms
- Formwork support
- Regular Formwork

CONCEPTUAL



S.2 SIDE ELEVATION 2
SCALE: 1/2"=1'



S.3 SIDE ELEVATION 3
SCALE: 1/2"=1'

Type 1 and 2 fender formwork similar

S.Y. KIM, PE, SE
CONSULTING STRUCTURAL ENGINEERS
2384 LANCASTER COURT HAYWARD, CALIFORNIA 4642 (510)-582-9718

PORT OF STOCKTON – EAST COMPLEX
BERTH 7 & 8 IMPROVEMENT PLANS

Waterproof Formwork

STOCKTON, CALIFORNIA
DECEMBER, 2021



REV. NO.	DESCRIPTION	DATE	SCALE:	SHEET
ADDENDA NO. 1		5/13/2022	DRAWN BY: FA	27
			DESIGNED BY: KM	OF 29 SHEETS
			CHECKED BY: KM	JOB NO. 2107
			AS BUILT BY:	

SEE TITLE SHEET FOR BENCHMARK INFORMATION

C:\Users\jkim\OneDrive\Documents\Port of Stockton\Berth 7 & 8\27.dwg Dec 07, 2021